

GUIDE PRICE

**£750,000**

**Durrants Drive**

Croxley Green, Rickmansworth, WD3 3NR

## PROPERTY SUMMARY

Nestled in the desirable Durrants Drive, Croxley Green, this impressive extended semi-detached house presents an exceptional opportunity. In need of complete refurbishment. With five generously sized bedrooms and approximately 1400 square feet of living space, this property is perfect for growing families.

The ground floor boasts two well-proportioned reception rooms, and a kitchen / breakfast room. Ascending to the first floor, you will find five bedrooms, a family bathroom, and a separate WC.

The exterior of the property is equally appealing, featuring a substantial 77ft rear garden. The integrated garage and carport, along with driveway parking for up to three vehicles, offer practicality and ease for busy families. Set on a large corner plot, there is further potential to extend and develop the property, subject to planning consent.

Sold with no upper chain, this property is ideally located near excellent schools, local shops, parks, and the Metropolitan line station, making it a prime choice for families and commuters alike. With its vast potential and prime location, this extended semi-detached house is a fantastic opportunity to create a fabulous family home in a sought-after area.

5



1



2







# Durrants Drive, Croxley Green, Rickmansworth, WD3 3NR

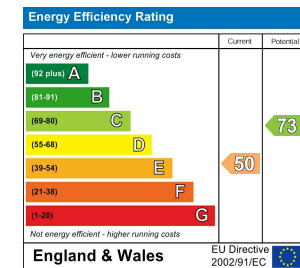
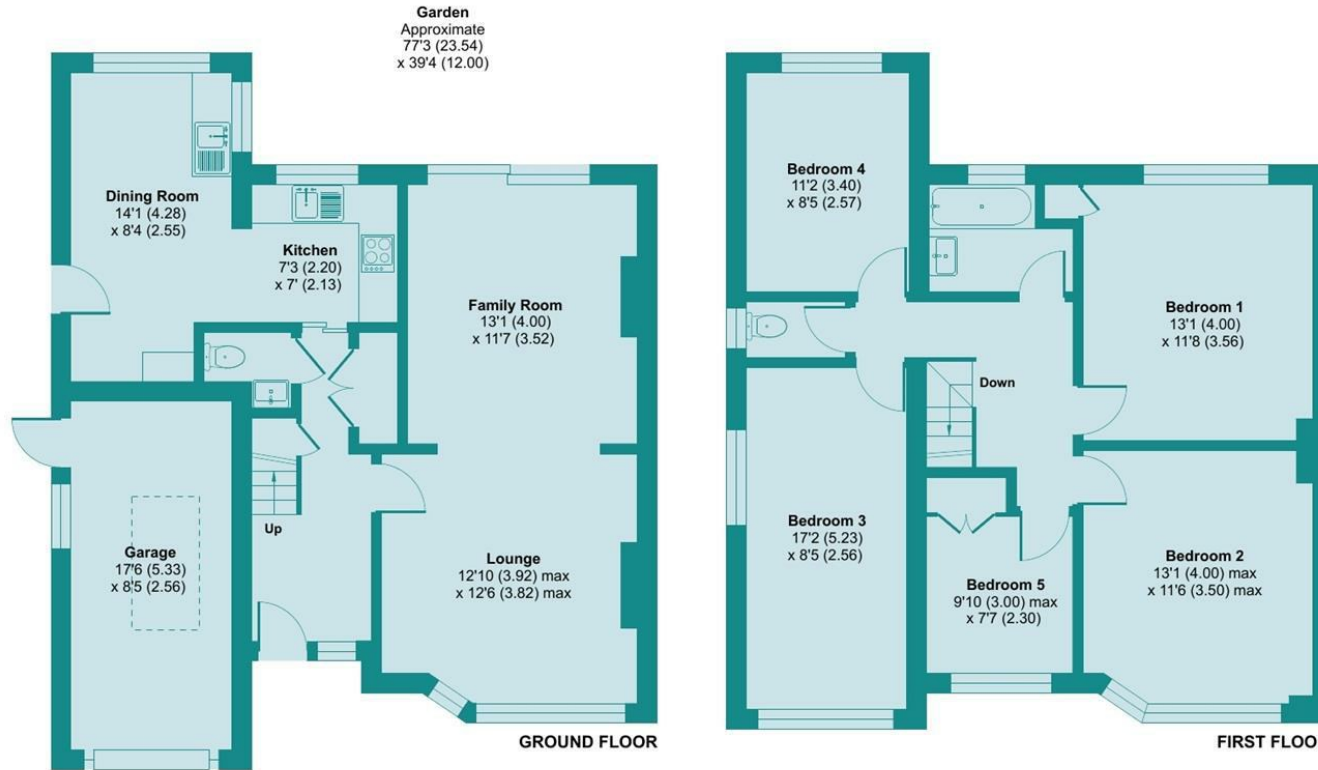
Approximate Area = 1387 sq ft / 128.8 sq m  
 Garage = 141 sq ft / 13 sq m  
 Total = 1528 sq ft / 141.8 sq m  
 For identification only - Not to scale

**LOCAL AUTHORITY**  
 Three Rivers District Council

**TENURE**  
 Freehold

**COUNCIL TAX BAND**  
 F

**VIEWINGS**  
 By prior appointment only



Agents Note: Whilst every care has been taken to prepare these particulars, they are for guidance purposes only. All measurements are approximate and are for general guidance purposes only and whilst every care has been taken to ensure their accuracy, they should not be relied upon and potential buyers/tenants are advised to recheck the measurements

Floor plan produced in accordance with RICS Property Measurement 2nd Edition, incorporating International Property Measurement Standards (IPMS2 Residential). © nichecom 2025. Produced for James Estate Agents. REF: 1384075



**OFFICE ADDRESS**  
 141 New Road  
 Rickmansworth  
 Hertfordshire  
 WD3 3EN

**OFFICE DETAILS**  
 01923 710500  
 info@jamesestateagents.com  
 https://www.jamesestateagents.com